

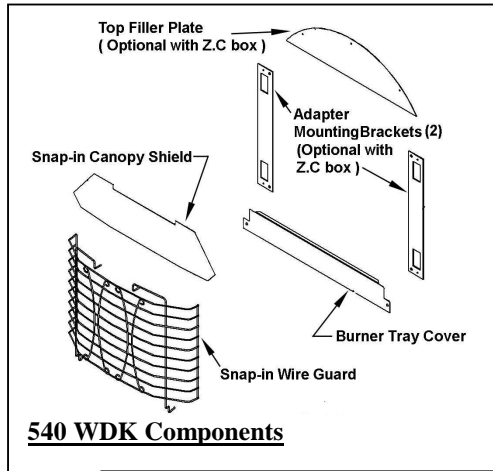


Model 540 WDK

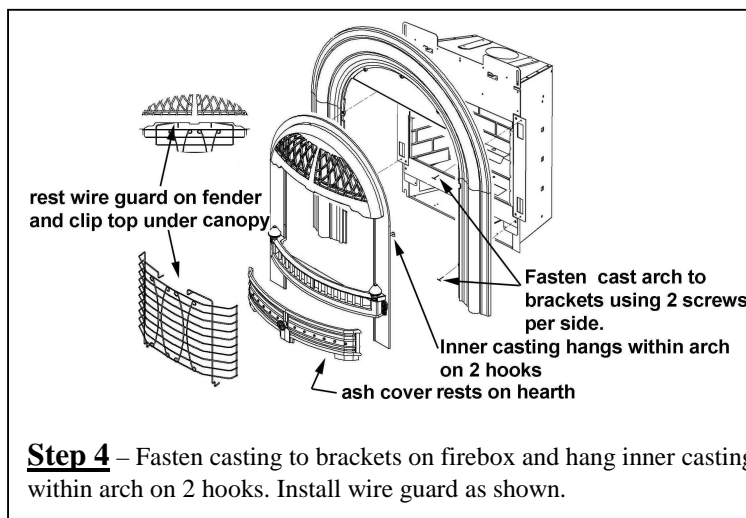
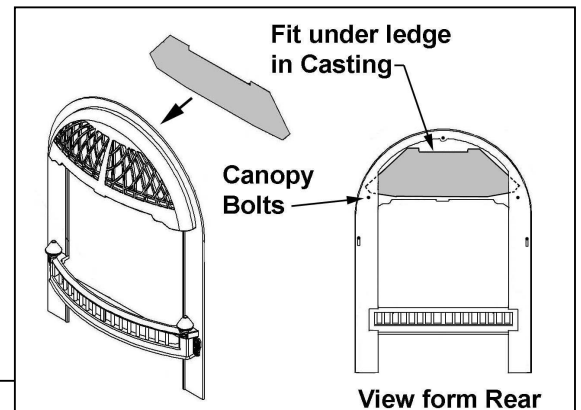
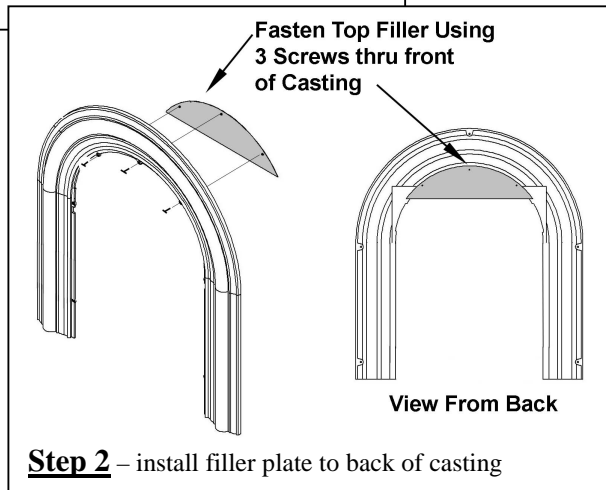
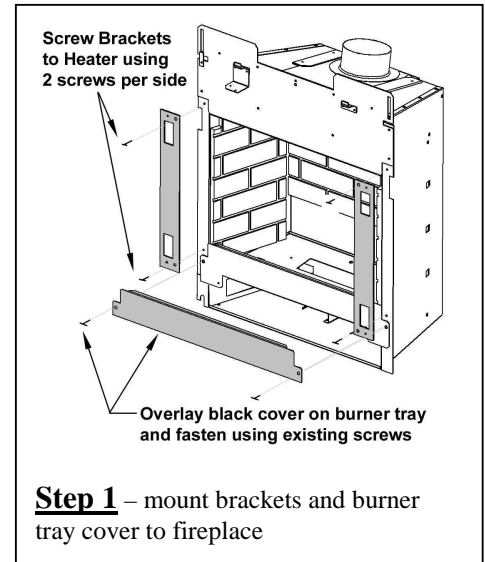
Wire Dressguard Kit

Required when fitting Windsor Arch Fronts to 922 Adorn Fireplace

Oct 2003



Model 540 WDK is required for all 922 Adorn Fireplace installations fitted with 539/549 Windsor Arch Cast fronts.



Insert one corner of the shield into the corner behind the cast frame as shown. Bend the canopy shield to a slight radius while inserting the other corner behind the cast frame as shown (it may be necessary to loosen canopy bolts). With both the corners behind the cast frame, snap the shield forward to follow the curve of the cast iron canopy. The top of the shield should fit under the projecting ledge in the casting as shown.